

B&S Beauty Supply

Model # D-201HM

**ION FACIAL STEAMER WITH HIGH FREQUENCY
& MAGNIFYING LAMP**



Thank you for choosing our products

Ion Facial Steamer

The basic concept of this facial steamer, which has the newest modern design and fashion, is that it uses electro thermal pipe to heat water for generating steam. Ozone lamp helps disinfect and decontaminate the steam. The sterile steam is passed to the skin where the treatment is needed.

The special feature of this instrument is that it has an AUTO TURN-OFF SYSTEM. When the probe is out of water, the AUTO TURN-OFF SYSTEM will cut off power and sound an alarm to remind the operator water is insufficient. This will save energy and prolong the machine's service life. With its smooth and beautiful shape, high-tech structure, this machine has been very popular in many markets.

CAUTION:

When the water level drops below the lowest extremity of the probe, the power supply will be automatically cut off. Conversely, when the water level is back above the lowest extremity of the probe, the power supply will automatically return. While the machine is in use, the probe must remain immersed in water.

Always turn off the machine when not in use, even if there is no water in the water jar.

Otherwise, dust or dirt particles in the air may trick the sensors of the heating element which may heat the water jar while empty. This could cause damage to anyone who may touch the water jar while empty, may overheat and burn out the Thermal Fuse (Steamer would have to be shipped back for replacement of Thermal Fuse) or may shatter the water jar.

Best idea...Please UNPLUG all machines from electrical outlets, when not in use. This applies to all electrical machines you may have. This will also save you on your electric bill. 'Standby Power' refers to the energy used by some products when they are turned off but still plugged into an outlet. B&S strongly recommends the use of a Power Strip with ON/OFF Switches to avoid leaving the Steamer turned ON.

Notice:

1. When the lowest extremity of probe is really dirty, its sensitivity will be affected / lower.
2. When voltage is below 100 volts, the machine may not work.
3. When using pure (distilled) water, initially the machine may not work. The probe may not recognize that there is water, because of lack of impurities in pure (distilled) water. In this case, try regular tap water for one time. The machine will work. After, switch back to pure (distilled) water. Pure (distilled) water will protect the elements and keep your machine running for a longer time.
4. DO NOT add any essential oil in water. If somebody adds any essential oil in water by mistake, clean the water jar and the elements thoroughly. After this, turn on the machine for about 10 minutes to see if spits steam or water. Make sure to aim the steam away from your customers or other people when testing this. Please remove any water left overnight from the water jar. Otherwise, the water may thicken and cause spitting.
NOTE: Some essential oils may be very corrosive and may damage the integrity of the plastic nozzle. The use of corrosive essential oils is not recommended and cannot be covered under the One Year Limited Warranty.
5. Please confirm that the gasket is positioned correctly. The purpose of the gasket is to create a tight seal between the water jar and the machine. If the gasket is not positioned correctly, there may be a gap in between the water jar and machine. This may cause hot water or steam to spit from the gap.
6. Each time the Water Jar (#21) is positioned in place, make sure to lock it in place by tightening the Plate Locking Knob (#26).
7. Please make sure water is never over the maximum water level line, which is marked on the water jar. If this happens, boiling water may overflow and get into the Steamer Arm or the hose within. Water may accumulate inside and may cause spitting.

Model # D-201HM

Ion Facial Steamer with High Frequency & Magnifying Lamp

Very Important: STEAMER MAY SPIT. Do NOT aim the steamer nozzle in the client's face until after a perfect steam is present. With ALL steamers, it is possible that there may be moisture/condensation inside the tubing as a result of past usage. This may happen with any steamer due to a multitude of reasons: Lack of proper maintenance; Filling the water jar too much; Leaving water in jar overnight which may thicken water; Using Essential Oils. Common sense dictates not to aim the steamer nozzle in the client's face until after a perfect steam is present.

In case of spitting, follow the below steps to flush out the system, and then, allow the steamer to dry out for 24+ hours.

1. Clean the water container thoroughly.
2. Also clean the heating element to make sure there is no chemical residue build up. Build up will happen if the heating element was not cleaned on a regular basis, as recommended in this manual; especially if tap water was being used instead of distilled water.
3. Run the steamer with water jar half full.
4. After completion, run the steamer a second time with water jar half full.
5. After completion, do not run the machine for 24+ hours.

Features, Electrical Specifications

1. It will take 5 to 8 minutes to generate steam.
2. Steamer Arm can be rotated left and right. DO NOT use force if it is resisting.
3. Heater Coil wattage is 650 watts.
4. Voltage is 100v to 120v.

Assembly

1. Insert 2 pieces of the Wheel Stand (#31) under the Stand Claw (#30).
2. Insert Main Pole (#29) into the top of Stand Claw (#30).
3. Use Bolt (#32) to connect the Stand Claw (#30) and Main Pole (#29) together.
*** It is a good idea to make reminders to check the tightness of this bolt periodically. With time and usage, the bolt may loosen a little and may need re-tightening.
4. Loosen the Height Adjustable Lock (#28) on the top of Main Pole (#29).
5. Insert Metal Middle Pole (#27) into the Main Pole (#29).
(**CAUTION:** there is a strong spring inside of the Main Pole (#29). When you insert the Metal Middle Pole (#27) into it, please be very careful. The Metal Middle Pole (#27) may pop up and you may get hurt! Please use one hand to hold Metal Middle Pole (#27) and lock the Height Adjustable Lock (#28) tightly!)
6. Insert the Magnifying Lamp Connector (#33) into Metal Middle Pole (#27).
Use the optional Magnifying Lamp Connector Screws (#34) for extra tightness, as needed, so that the Magnifying Lamp Connector (#33) does not swing.
7. Insert the Steamer Pole (#41) into the Metal Middle Pole (#27).
8. Place the Gasket (#20) on the top of the Water Jar (#21) establishing a snug fit.
9. Insert the Water Jar (#21) in place.
10. Screw tight the Water Jar Holding Plate (#24) under the Water Jar (#21).
11. Lock the Water Jar (#21) in place using Plate Locking Knob (#26).
12. Make sure the top of the Gasket (#20) creates a tight seal between the Water Jar (#21) and the machine.
13. Position Magnifying Lamp Box (#35) on the far end of Magnifying Lamp Connector (#33).

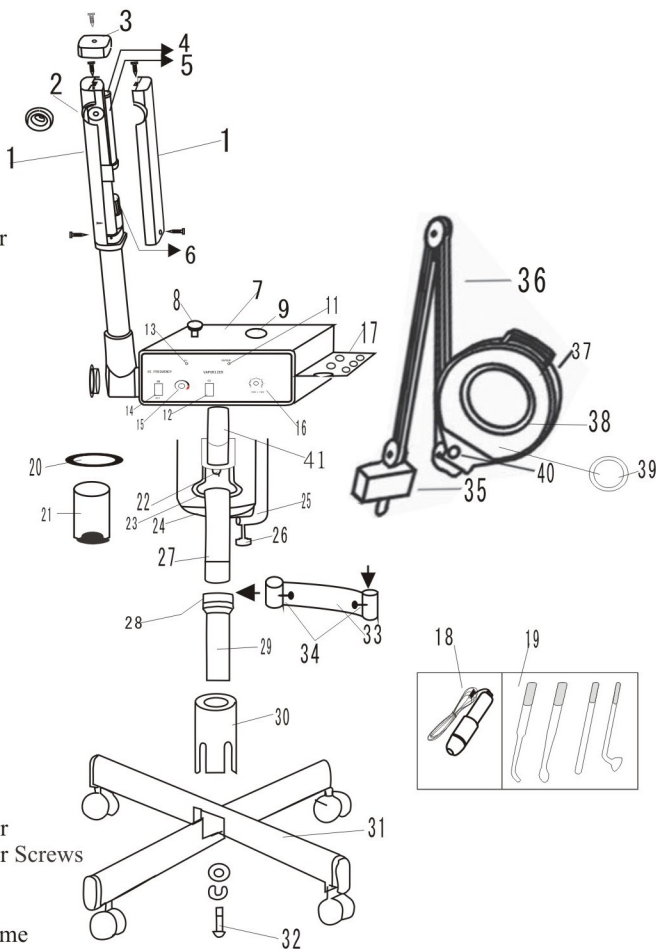
DURING USE... Please do NOT move this item by grabbing the Steamer Arm. This may dislocate the arm and/or damage the Arm Holder mechanism inside. Such damage caused is not covered under warranty.

Model # D-201HM

Ion Facial Steamer with High Frequency & Magnifying Lamp

Parts:

1. Steamer Flat Tube Cover
2. Nozzle Cap
3. Flat Tube Head Cap
4. Uv Lamp Socket
5. Uv Lamp
6. Uv Lamp Starter
7. Protective Cover
8. Arm Lock
9. Water Pouring Hole
10. Faceplate Sticker
11. Indication Lamp For Steamer
12. Power Switch For Ozone
13. Indication Lamp For Hf
14. Power Switch For Hf
15. Hf Level Adjust
16. Timer Control Knob
17. Hf Parts Holder
18. Hf Wand
19. Hf Electrodes
20. Gasket For Jar
21. Water Jar
22. Water Level Sensor
23. Heating Coil
24. Water Jar Holding Plate
25. Water Jar Supporter
26. Plate Locking Knob
27. Metal Middle Pole
28. Height Adjustable Lock
29. Main Pole
30. Stand Claw
31. Wheel Stand
32. Bolt
33. Magnifying Lamp Connector
34. Magnifying Lamp Connector Screws
35. Magnifying Lamp Box
36. Magnifying Lamp Arm
37. Magnifying Lamp Lens Frame
38. Magnifying Lamp Cover
39. Magnifying Lamp Bulb
40. Magnifying Lamp Starter
41. Steamer Pole



NOTE: Some essential oils may be very corrosive and may damage the integrity of the plastic nozzle.

The use of corrosive essential oils is not recommended and cannot be covered under the One Year Limited Warranty.

Operation (Steamer)

1. Fill up the water from Water Pouring Hole (#9) or fill up the water into Water Jar (#21) then put in place. Make sure Water Jar (#21) remains locked in place by checking and/or tightening the Plate Locking Knob (#26).

Caution: Water should not be over the maximum line as marked on the Water Jar (#21).

2. Connect the Power Cord.
3. Rotate the Timer Control Knob (#16) to the desired time, which will start the Steamer Function.
4. It takes around 5 to 8 minutes to heat up.
5. You will see there are some bubbles on the Heating Coil (#23).
6. After that happens, steam will come out from Spray Nozzle soon.
(**CAUTION:** Do not get too close to the Spray Nozzle. The steam may burn your skin!)
7. You may switch ON the Ozone Switch (#12).
8. You may turn around 180° the Steamer Arm to adjust the angle you want.
9. You may also adjust the height by Height Adjustable Lock (#28).
10. When the water gets below to the lower water line on the Water Jar (#21), the Water Level Sensor (#22) will stop the steamer immediately. Please rotate the Timer Control Knob (#16) to Zero to make sure that the Steamer Function is completely turned off.
11. You may add water from the Water Pouring Hole (#9).
(**CAUTION:** the temperature inside the Water Jar (#21) is still hot. Don't add any cold water in! The Water Jar (#21) may crack or shatter. Please add room temperature water only!)
12. Please empty and clean the Water Jar (#21) every day if used!
13. **Maintenance:** Please clean the Water Jar (#9) and Heating Coil (#23) at least one time weekly. To clean other components of the steamer, place a teaspoon of White Vinegar (about 10 drops) in the Water Jar (#9) and add water below the Maximum Line. Run one cycle, at least for 15 minutes. Upon completion, rinse the Water Jar (#9) thoroughly and let dry overnight.

Very Important: STEAMER MAY SPIT. Do NOT aim the steamer nozzle in the client's face until after a perfect steam is present.

High Frequency

Functions:

Using the ultraviolet rays, the High Frequency machine generates heat energy for the effects of elimination and absorption. It increases glandular activity, stimulates circulation of the blood, plays a germicidal action which kills bacteria, increases metabolism of the skin, and aids in deeper penetration of product into the skin.

Operating Guidance:

1. Select appropriate electrode, then insert into the high frequency handle.
2. Turn switch "ON" then adjust to the proper intensity.
3. The way to change the electrode is to turn the intensity dial to zero position and press the switch "OFF" to pull out the electrode before inserting another one.

Electrodes:

D-217002 Acne Sparking Electrode For acne and inflammation.

D-217003 Straight Electrode Provides ultraviolet for restoring healthy skin.

D-217004 Spoon Electrode For skin treatment in large level area on face and body.

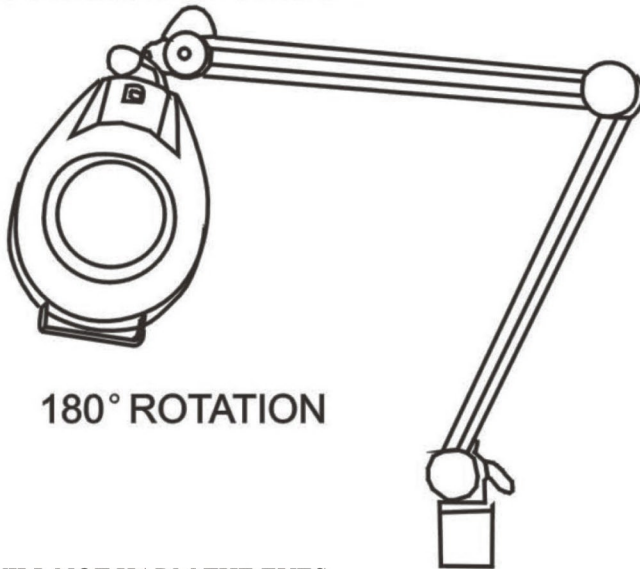
D-217005 Mushroom Electrode For performing electronic treatment on any points of the body to promote blood circulation.

CAUTION:

1. Electrodes must not come in contact with any metal objects. The user and the client should remove all jewelry from hands and arms first.
2. Do not apply electrode to same area for a long period to time.
3. High frequency should not be used if the client is pregnant or has a pacemaker or a history of heart disease.
4. Do not use lotion with alcoholic content. If it is desirable to use this type of lotion, the high frequency should be used first and the lotion applied later.

Magnifying Lamp

UP-DOWN ADJUSTER TUBE



180° ROTATION

MILD LIGHT WILL NOT HARM THE EYES.
THE GLASS MAGNIFIES FIVE AND EIGHT TIMES.
DISTANCE ADJUSTER TUBE FOR EASE OF OPERATION.

Operation (Magnifying Lamp)

1. Connect the power cord.
2. Turn ON the Power Switch; it will take 5-7 seconds to start up.
3. You may adjust the Magnifying Lamp Arm (#36) to any angle.
4. You may adjust the Magnifying Lamp Lens Frame (#37) as needed.
5. You may use the optional Magnifying Lamp Connector Screws (Part #34) for extra tightness, as needed.

Please be careful when moving to prevent the magnifying lamp from falling down.



Imported by B&S Beauty Supply
www.bns-beautysupply.com
info@bns-beautysupply.com